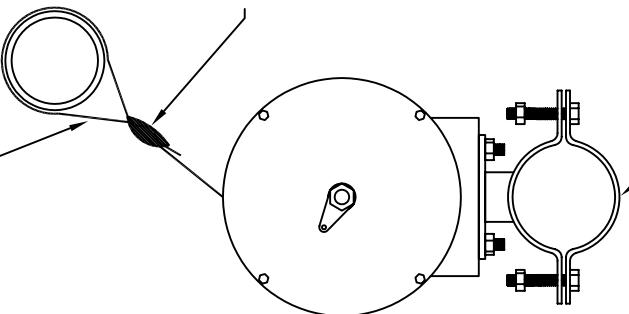


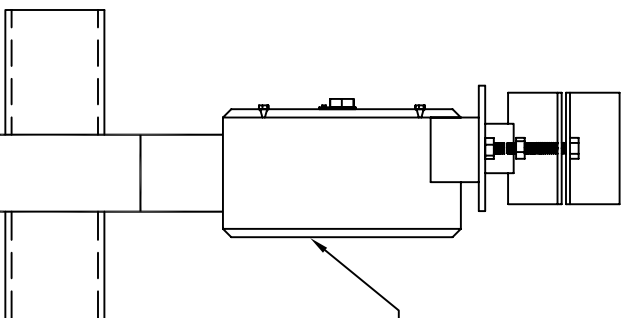
SPALDING®

**Aut-O-Loc Safety Belt
Model # 402-765**

SADDLE CLAMPS PROVIDED TO SECURE UNIT TO 3 1/2" O.D. SUPPORT PIPE PARALLEL OR PERPENDICULAR TO AUTOLOCK



STRAP BUCKLE PROVIDED TO ATTACH TO BACKSTOP FRAME STRUCTURE



RETRACTING SPRING, INERTIA STYLE LOCK, AND NYLON STRAP CONTAINED INSIDE CAST ALUMINUM HOUSING

6000 LB. TENSILE STRENGTH
NYLON STRAP EXTENDS A
MAXIMUM OF 35'

ALL

AUT-O-LOC SAFETY BELT

DO NOT SCALE

SCG 0402765

The Spalding logo, featuring the word "SPALDING" in a bold, blue, sans-serif font with a registered trademark symbol.

SPALDING SPECIFICATIONS

DATE: 01/01/06

MODEL: 402765

DESCRIPTON: Aut-O-Loc Safety Belt

SPECIFICATIONS:

The unit attaches to front or rear folding units to guard against accidentally falling. The lock has a fully automatic rest and a positive locking mechanism that sets by inertial and/or centrifugal force. Tested to 1,500 lbs. of free fall load.

The housing uses integrally cast components for high strength and an attractive appearance.

A 35' of 2" wide belt stores automatically inside the housing. The Belt is rated at 6,000 lbs.

The universal mounting bracket allows for attachment to 3" pipe parallel or 90 degrees. Custom pipe clamps are available if needed.

All components are factory sealed to eliminate tampering.

WARRANTY: Five years

SHIPPING WEIGHT: 20 lbs.