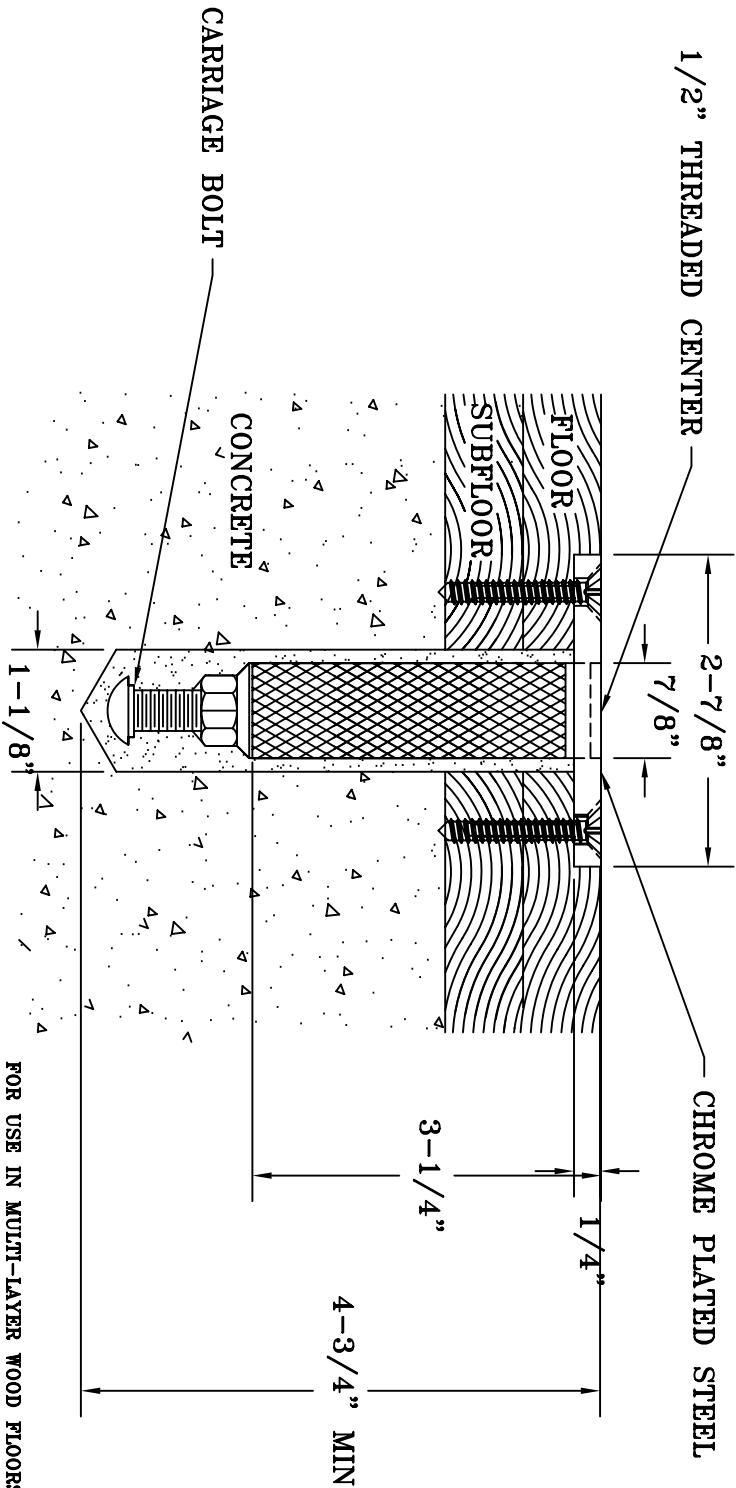
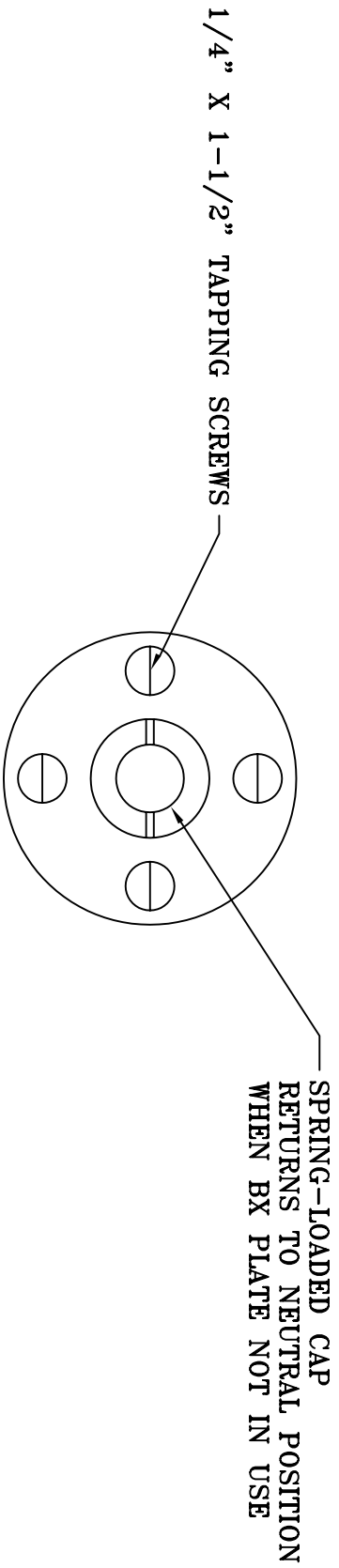


SPALDING®

**Style BX Floor Plate
Model # 422-211**



FOR USE IN MULTI-LAYER WOOD FLOORS OVER CONCRETE

BX FLOOR PLATE

DO NOT SCALE

SCG #0422211



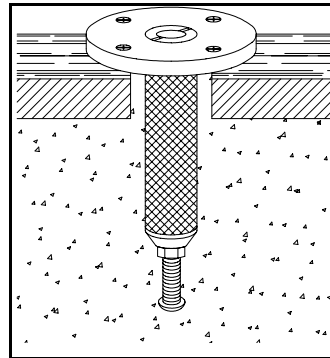
SPALDING SPECIFICATIONS

DATE: 01/01/06

MODEL NUMBER: 422211

DESCRIPTION: Style BX Floor Plates

GENERAL DIMENSIONS: Style BX floor plates are 1/2" threaded steel floor plates for use in installing gymnastics equipment such as uneven tension bars, horizontal bar, and ring frame. These floor plates are designed for installation into floors that have multiple layers of wood over concrete. The floor plate consists of a floor plate tube assembly that has a flat circular top that sits flush with the wood floor surface. These floor plates are identical to Style B plates except the floor plate body has been extended to 3-1/4" (81mm) in length. The floor plate will withstand greater than 6000 lb. vertical load with no pull out, when installed according to directions. These floor plates are compatible with all AAI cabled gymnastics apparatus as well as with T-base volleyball uprights.



CONSTRUCTION:

1. The floor plates consist of the following parts:
 - a. Chromed removable cap. Machined from 7/8" cold rolled round steel bar. Threaded externally to fit into the chromed floor plate body. Internal threads allow .400" engagement of 1/2" threaded fasteners used to attach the cabled apparatus.
 - b. Chromed floor plate plug. .375" x 1.068" steel plug for use in protecting internal threads from dirt and other damage.
 - c. External E-ring. Secures chromed floor plate plug inside chromed floor plate body.
 - d. Floor plate spring. Music wire spring designed to return cap to neutral position when apparatus cables are not attached to floor plate.
 - e. Chromed floor plate body. Machined from 7/8" cold rolled round steel bar. Internal threads to allow insertion of chromed removable cap and anchor screw. Knurled outer surface engages cement and holds body in place. The flat floor plate top is welded to the floor plate body and attaches to the wood floor surface with two #14 tapping screws.
 - f. Anchor screw. Machined from 3/4" cold rolled steel bar. Inserts in floor plate body and holds 3/8" carriage bolt and nut in place below floor plate body.
 - g. Hex nut. 3/8" threads for attachment of 3/8" carriage bolt.
 - h. Carriage bolt. 3/8" x 1-1/2" zinc plated. SAE J429 Grade 5 bolt with 85,000-psi proof load. Provides additional surface area for engaging floor plate in cement.
2. The floor plate shall be provided completely assembled and shall have the proper cement and installation instructions included with the floor plate package.
3. The floor plate must be installed and allowed to set for a minimum of 12 hours before use with equipment.

SHIPPING INFORMATION:

1 package - shipping weight: 2 lb.